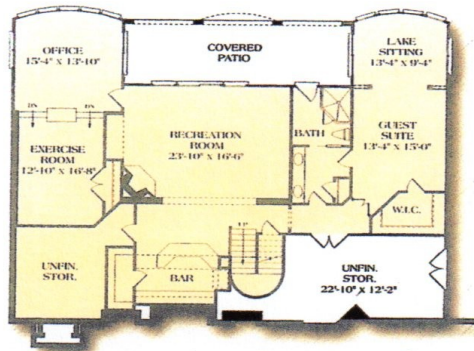


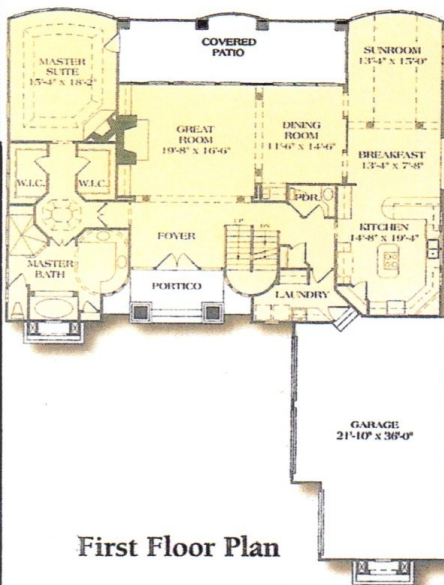
This Mediterranean style design features a master suite foyer, master suite fireplace, walk-in closets, spacious bath with garden tub and double vanities with a unique two-story silo allowing natural light to bathe the room. Perfect for lakefront, this basement design offers an entertaining/recreation area, exercise room, office and guest suite.



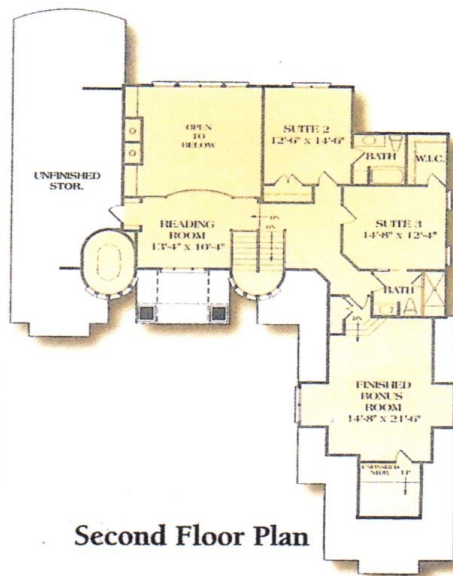
Basement Plan



Finished basement optional



First Floor Plan



Second Floor Plan

Phone: 708-599-1865
 Cell: 708-601-4678
 Fax: 708-598-5450

www.GortHomes.com

| | | |
|--------------|--------------|----------------|
| First Floor | 2,391 | Sq. Ft. |
| Second Floor | 922 | Sq. Ft. |
| TOTAL | 3,313 | Sq. Ft. |
| Basement | 1,964 | Sq. Ft. |
| Bonus Room | 400 | Sq. Ft. |
| Bedrooms | 4 | |
| Baths | 4.5 | |
| Width | 63'-10" | |
| Depth | 85'-6" | |
| Foundation | Basement | |

THE APPLETON